


Efficiency, cooperative aspects and prospects for dairy and beef sectors in Belarus

Ivan Kyssa, Dzmitry Lutayeu, Halubets Leonid, Babenkov Viktor, Yakubets Yuri, Popov Mikhail

International Public Association of Animal Breeders “East-West”, Minsk, Belarus

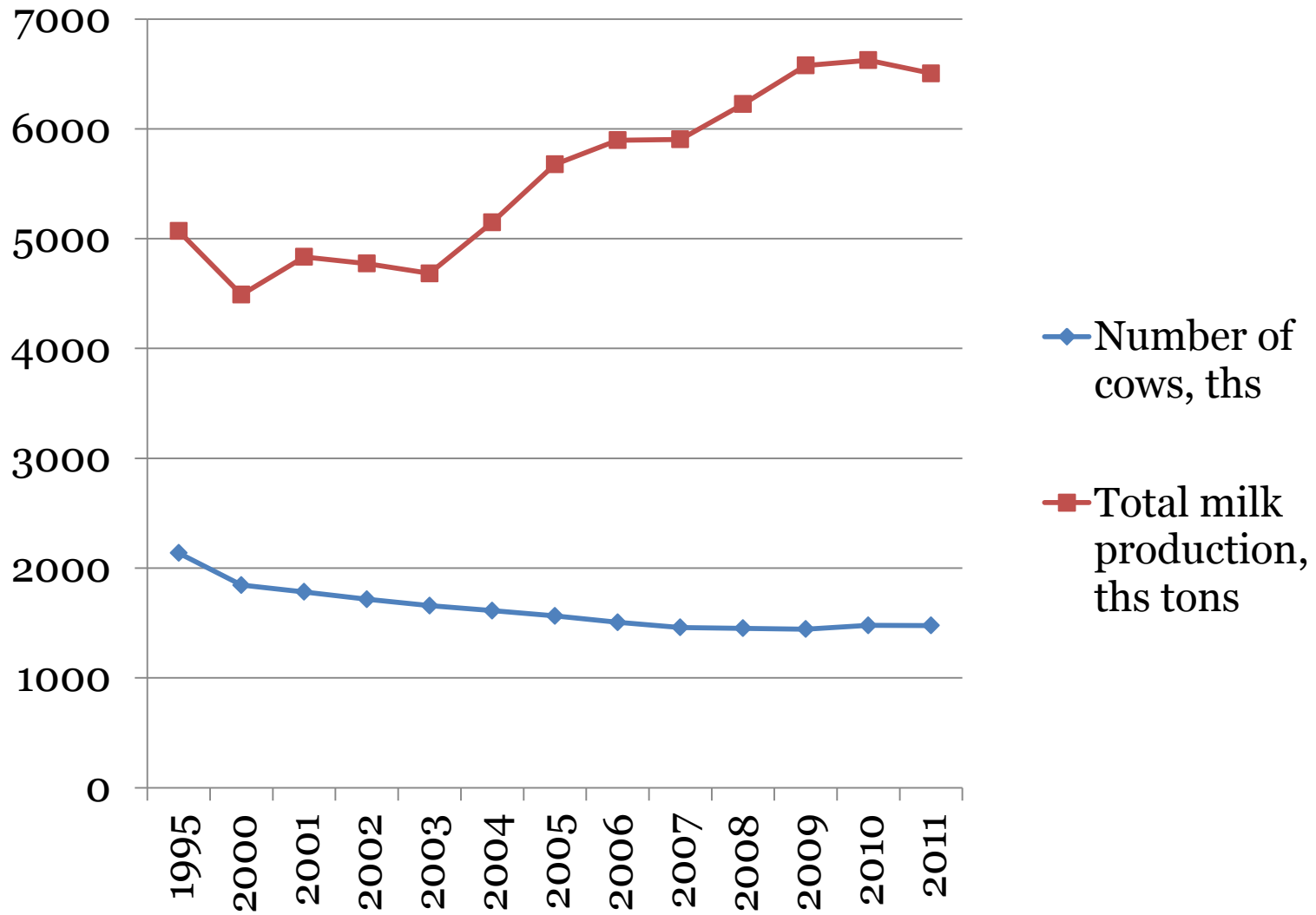
August 30th 2012, EAAP Meeting in Bratislava






Some statistics from year 2011	Value
Number of cows	1 477 000
Production level, kg per year	4 400
Milk production, tons	6 500 000
Population	9 450 000
Production of milk per habitant, kg	690
Consumption of milk products per habitant, kg	252
Production of meet per habitant, kg (including pork and chicken meet)	108
Consumption of meet products, kg	88

Development of milk production in Belarus 1995-2011





Some financial numbers from year 2011	Value
Total sum of export of milk products, millions US dollars	1 654
Total sum of export of meat products, millions US dollars	924
Total value of food export, millions US dollars	4 056
Exported to Russia of total export value, %	85

Main features of national agriculture:

- State ownership on agricultural land
- Rather low level of incomes in national economy
- Existing features of planned economy in agriculture



- Strong traditions from Soviet time - conservative people
- Beef farming is not popular
- Rather big net of milk/meat processors spread over country
- Close contacts with Russia and countries of Customs Union; Russia - Kazakhstan – Belarus
- Big sums of State investments - agriculture becomes more developed and intensified





Efficiency of dairy farming:

- Wide range of farms in production level and efficiency level – both 8000 and 2500 kg per year with an average at 4400 kg
- Milk price for nowadays is about 29-30 eurocents, there are many farms which have good economy and there are also almost bankrupted farms
- There are both efficient and inefficient farms in all sizes – from 200 to 1200 cows – mostly depending on the lacks in management
- Growing use of semen with high genetic potential
- Calving interval is 13,2 months..... (according to official statistics, but at the same time: Pregnancy Rate at most checked farms is 0,10-0,13



Last trends from the year 2012 (January – July):

- Number of cows increased with 2,5% to the January 2012
- Total milk amount is 4,5% more than during January-July 2011
- Continuously low price for oil (including natural gas), mineral fertilizers and costs for labour
- Growing investment in rebuilding and new building of farms, intensified genetics (semen), modern equipment and machinery for feed production
- Growing interest to specialized beef cattle breed
- First interest appeared to organic farming



Conclusions:

- Growing competition is a fact – increasing milk production in Russia, entrance of Russia to WTO, higher oil prices for Belarus in the future, unstable milk price on the world market



let's try to predict development of branch:

- development of Organic agriculture can be a way due to growing interest from consumers and big competition on the world's market of conventional products
- is it a time for private independent managers in agriculture? – it's an urgent need to increase efficiency of production and processing
- maximize own production of feed (both forage and cereals) with a special attention to protein rich fodder
- development of specialized farms with beef cattle, especially on the poor unproductive mark and development of other “new” branches



Thank you for attention